





## Aldington Close, Lodge Park, Redditch B98 7NE

Offers Over £160,000

3 1 1



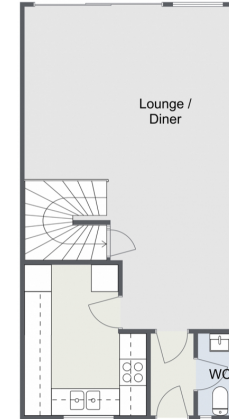
A neatly presented three bedroom end of terrace property offered with a good sized lounge/diner, enclosed rear garden, communal parking and situated in the popular location of Lodge Park, Redditch. **\*\*No Onward Chain\*\***



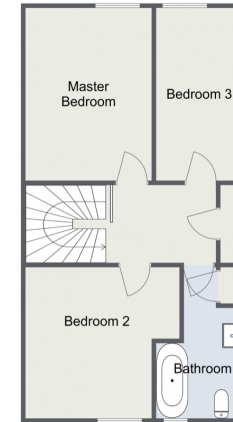


## Aldington Close, Redditch

### Ground Floor



### First Floor



Total Area  
Approx  
89.7 sq m  
965.5 sq ft

For illustrative purposes only. Decorative finishes, fixtures & fittings do not represent the current state of the property. Measurements are approximate & not to scale. Floor Plans made using RoomSketcher.

270702022, 15:30

Energy performance certificate (EPC) - Find an energy certificate - GOV.UK

### Energy performance certificate (EPC)

31, Aldington Close Redditch B96 7NE	Energy rating <b>E</b>	Valid until 7 October 2023 Certificate number 8897-7820-1369-5468-3885
--	---------------------------	--

Property type Mid-terrace house

Total floor area 90 square metres

### Rules on letting this property

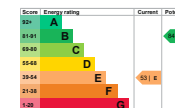
Properties can be rented if they have an energy rating from A to E.

If the property is rated F or G, it cannot be let, unless an exemption has been registered. You can read [guidance for landlords on the regulations and exemptions](https://www.gov.uk/government/guidance/energy-efficiency-standard-landlord-guidance) [here](https://www.gov.uk/government/guidance/energy-efficiency-standard-landlord-guidance).

### Energy efficiency rating for this property

This property's current energy rating is E. It has the potential to be B.

[See how to improve this property's energy performance.](#)



The graph shows this property's current and potential energy efficiency.

Properties are given a rating from A (most efficient) to G (least efficient).

Properties are also given a score. The higher the number the lower your fuel bills are likely to be.

For properties in England and Wales:

the average energy rating is D  
the average energy score is 60

<https://find-energy-certificate.service.gov.uk/energy-certificate/8897-7820-1369-5468-3885?property=31>

1/5

For more information on this house or to arrange a viewing please call the office on:

**01527 540 654**

Alternatively, you can scan the QR to view all of the details of this property online.



**arden**  
ESTATE AGENTS